

DataMiner network monitoring solution "will interface with any third-party device"

Skyline Communications has been demonstrating how its DataMiner (DMS) network monitoring and control solution allows operators to capture their entire operations in a single screen, independent of the vendors selected for the individual components, and how the system can optimise return on investment.

The open architecture solution, which is designed for advanced management of earth stations, headends, backbones, data centres and HFC networks, among other things, is the first software platform capable of unconditionally interfacing with any third-party device, including any proprietary interfaces, according to Skyline.

"Today over 375 drivers have been deployed for devices supplied by over 90 different industry vendors," says Bert Vandenberghe,

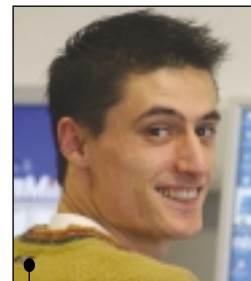
software R&D director at the Izegem, Belgium-based company. "Moreover, these drivers are designed in an open XML format, so that anybody can create new drivers, or modify existing drivers. For any proprietary interface, DataMiner will also provide a seamless conversion to SNMP so that any device can be interfaced with any third-party SNMP compliant software application."

DataMiner, which has been deployed as an umbrella management platform by Telenet, Belgacom, Canal Plus and Brutele, among others, offers unlimited client web access so the monitoring environment can be accessed from any location with a standard PC. The intuitive graphical interfaces provide comprehensive monitoring functions from real-time data, trend analysis and alarm management, to

advanced applications for automation, scheduling, event correlation and reporting etc.

One of the highlights for the company at IBC was DMS Spectrum Analysis, which allows integration of any third-party spectrum analysis devices, enabling functions like real-time spectrum remote interfacing, script-based RF performance monitoring and RF performance trend analysis.

The company has also been showcasing its new DMS Service capabilities, contained in the latest 3.0 Phantom release of DataMiner. "These allow operators to manage their technical infrastructure from an intuitive service-based perspective, rather than the more common, but less transparent, device-centric approach," notes Ben Vandenberghe, who is sales director at Skyline Communications.



Bert Vandenberghe,
software R&D
director, Skyline
Communications