



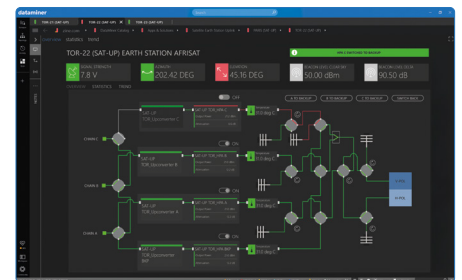
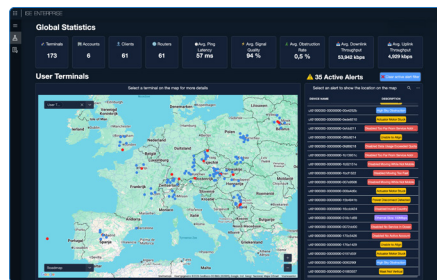
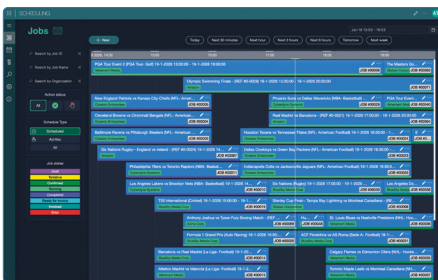
DUAL-USE TECHNOLOGY

COMMERCIAL OFF-THE-SHELF

OPERATIONAL FLEXIBILITY

Multi-domain awareness & control for combined and joint task forces

DataMiner's xOps architecture enables CJTFs to reconfigure digital workflows, security parameters, and operational boundaries on the fly without software redeployment or vendor engagement. Mission profiles activated in minutes. Zero-Trust enforced continuously.



The digital backbone for defense programs

DataMiner functions as the integration and orchestration layer between sensors, platforms, and decision-makers — delivering accurate, timely, and complete data to every level of command.

No vendor lock-in

Genuinely agnostic across hardware and system vendors.

Proven scalability

From single-site to full multi-national task force architectures.

Continuous development

New connectors, AI capabilities, and security enhancements released regularly.

Dual-use readiness

Seamlessly bridges secure military networks with civilian infrastructure.

How DataMiner supports defense operations

DataMiner xOps is your operational platform for data-driven mission planning and operations **across land, sea, air, space, and cyberspace**. It connects raw field data to high-level strategic command through a structured, vendor-agnostic, multi-layer architecture.



Training & Simulations



Common Operational Picture



Adaptive Agility



Dual-use readiness



From data to intelligence

Situational awareness & common operational picture

- Operational network status and communications health
- ISR sensor detections and UAV telemetry feeds
- SATCOM link performance and satellite subsystem health
- Mission asset status, platform locations, and facility data

Mission planning & orchestration

- Automated SATCOM link setup, transponder reservation, and teardown
- Provisioning of secure network segments for mission-specific comms
- Initiation of video streams to command centers with end-to-end confirmation
- Post-mission reporting with full usage statistics and data records

Network & communications monitoring (J6 support)

- SATCOM links and satellite subsystems monitored at component level
- RF spectrum and transponder utilization tracking
- Anomaly correlation to distinguish isolated incidents from systemic threats
- Automated failover and rerouting to maintain comms under degraded conditions
- Cyber awareness: continuous detection of intrusion signatures and rogue devices

AI-driven intelligence & automation

- Continuous anomaly detection: fuel consumption spikes, RF interference, network intrusions
- Predictive maintenance: identify degrading components before mission impact
- Automated frequency switching, service provisioning, and firmware updates
- Automated alerting ensures the right intelligence reaches the right personnel, instantly

Interoperability across coalition partners

- Acts as a neutral integration layer — no common equipment standards required
- Structurally eliminates data duplication and conflicting information
- Scales from tactical unit level to full Joint Force Command without architectural changes
- Equally applicable to defense, peacekeeping, and humanitarian/disaster relief missions

You're in good hands

Skyline Communications brings 25+ years of experience delivering mission-critical network management and orchestration solutions globally, across telecommunications, satellite operations, and critical infrastructure.

1500+
users worldwide

125+
countries covered

9000+
product integrations

9000+
systems deployed

The company has grown into a global software leader and the trusted partner for organizations in over 125 countries, providing future-proof xOps solutions.

Not only has Skyline's DataMiner xOps platform received various prestigious awards, but the company itself has also been awarded multiple times for innovation, growth, and excellence.

With its global presence and offices in Belgium, Bosnia and Herzegovina, Portugal, Singapore, the UAE, and the US, Skyline empowers organizations worldwide to drive innovation with confidence.

Industry recognition

DataMiner has been awarded for the **2026 Teleport Technology of the Year** by the **World Teleport Association**, recognizing the convergence of satellite ground segments and terrestrial operations into a single GenAI-powered entity.



www.skyline.be



community.dataminer.services



[skyline-communications](https://www.linkedin.com/company/skyline-communications)